

Paper Reference 9MA0/02
Pearson Edexcel
Level 3 GCE

Mathematics
Advanced
Paper 2: Pure Mathematics 2

Wednesday 12 June 2019 – Morning

Diagram Book

**In the boxes below, write your name,
centre number and candidate number.**

Surname					
Other names					
Centre Number					
Candidate Number					

INSTRUCTIONS

There may be spare copies of some diagrams in case you need them.

**THIS DIAGRAM BOOK MUST BE
RETURNED WITH THE ANSWER
BOOK AT THE END OF THE
EXAMINATION.**

Contents

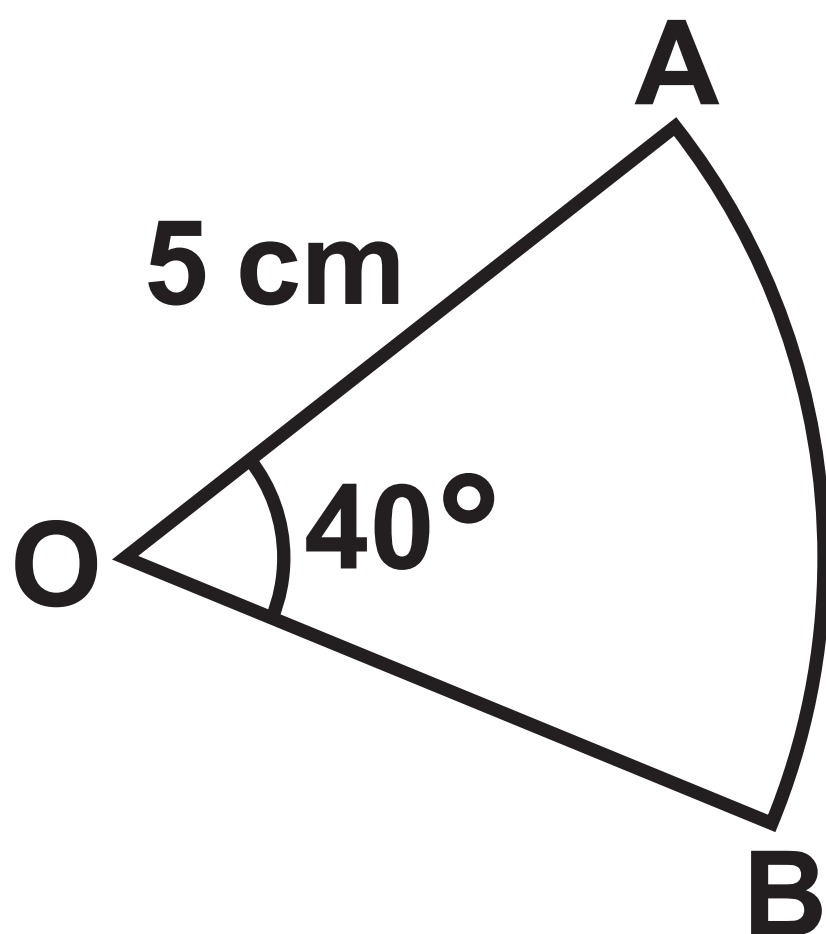
Page

4	Question 2
5	Question 3
6	Question 4
7	Question 5
8	Question 6
9	Question 9
10	Question 10
11	Question 11
12	Question 13

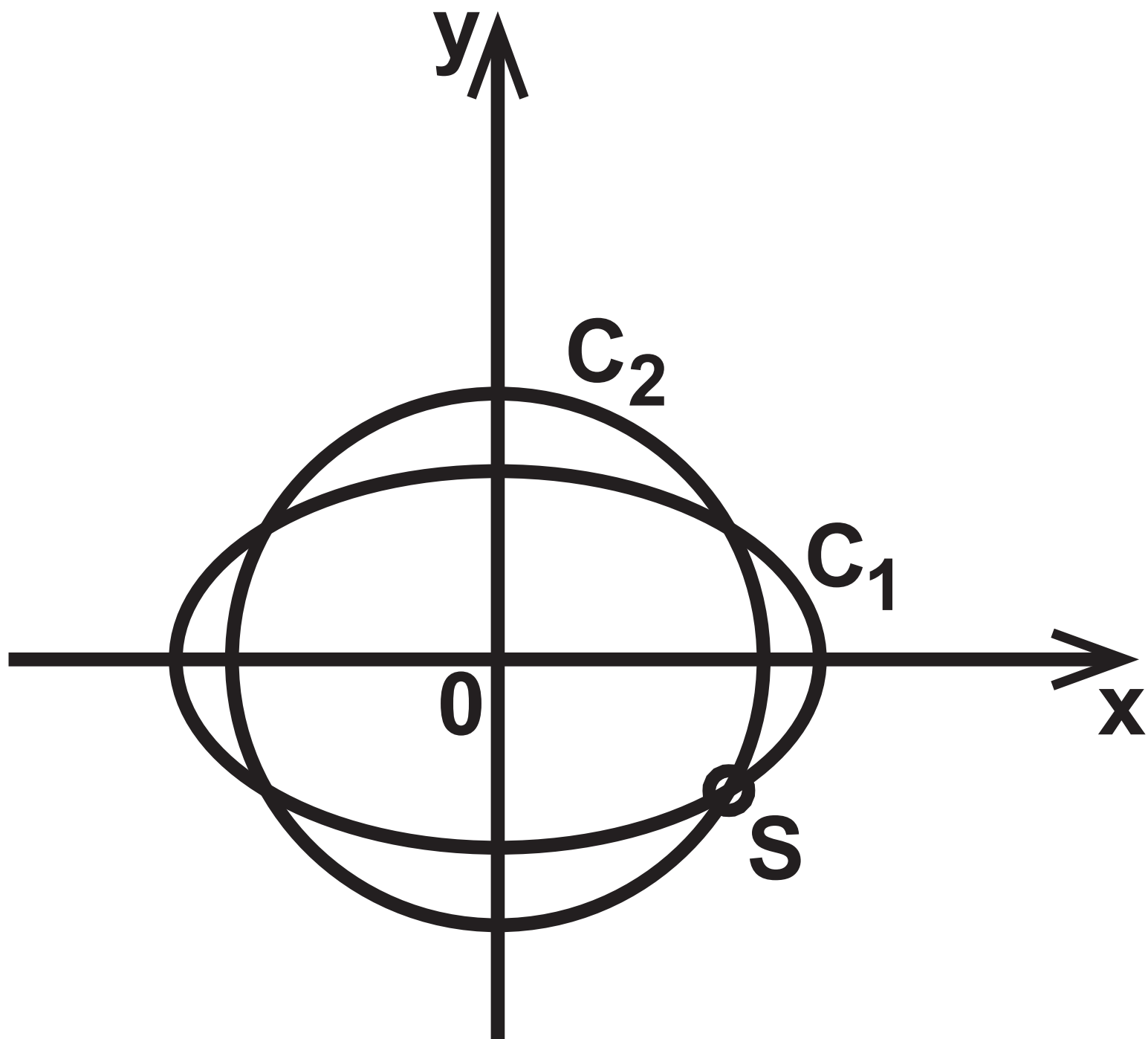
Question 2

Time (s)	Speed (m s^{-1})
0	2
5	5
10	10
15	18
20	28
25	42

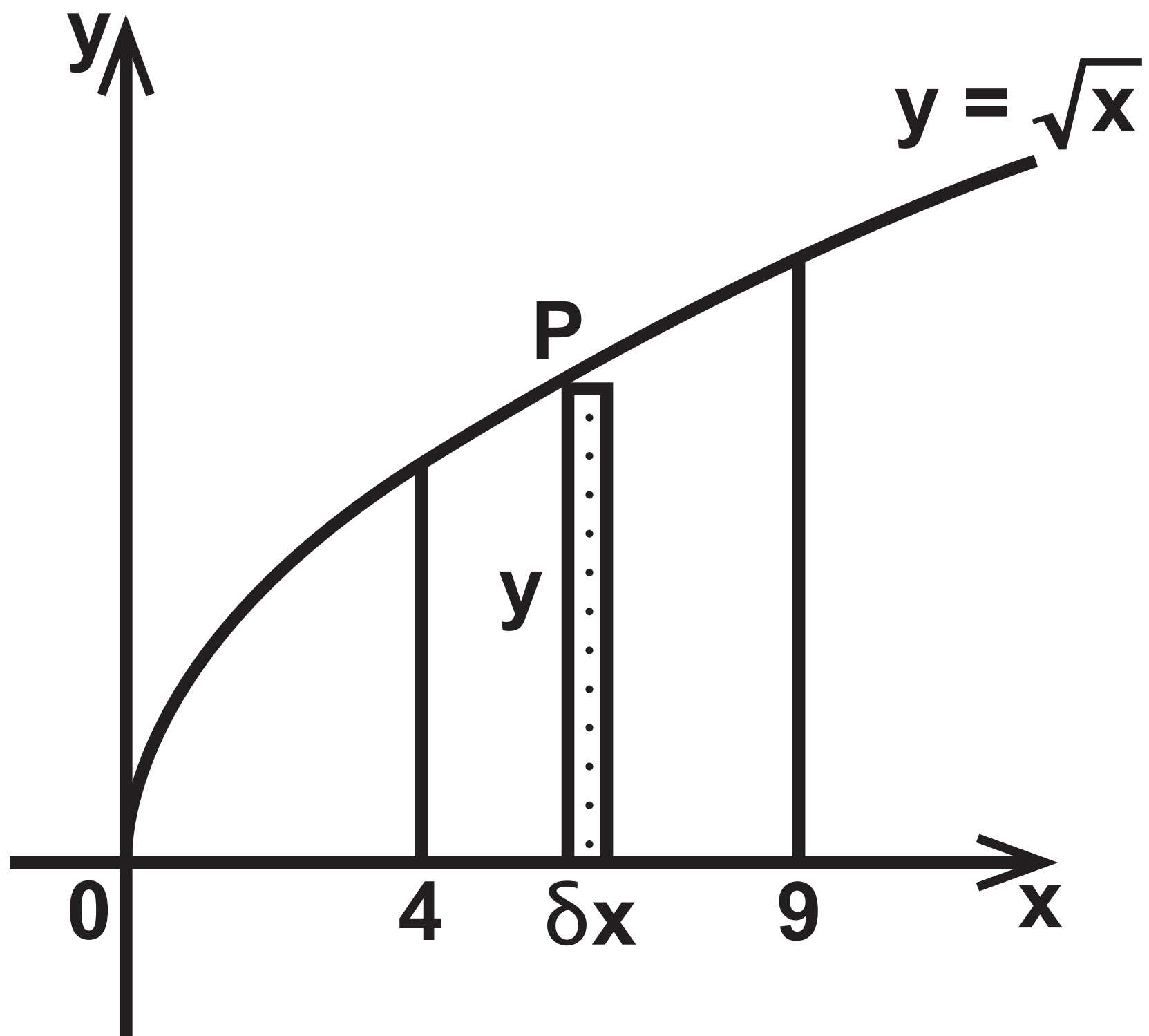
Question 3



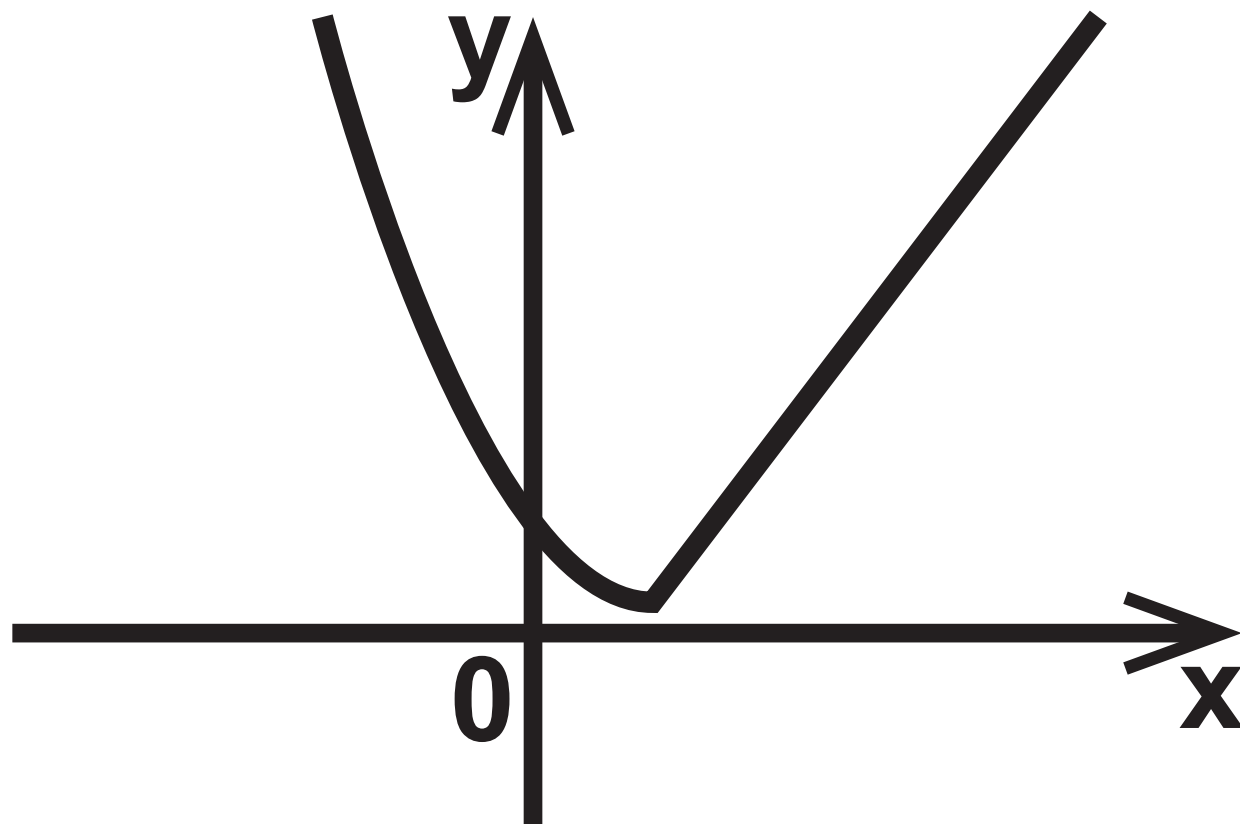
Question 4



Question 5



Question 6



Question 9

Diagram 1

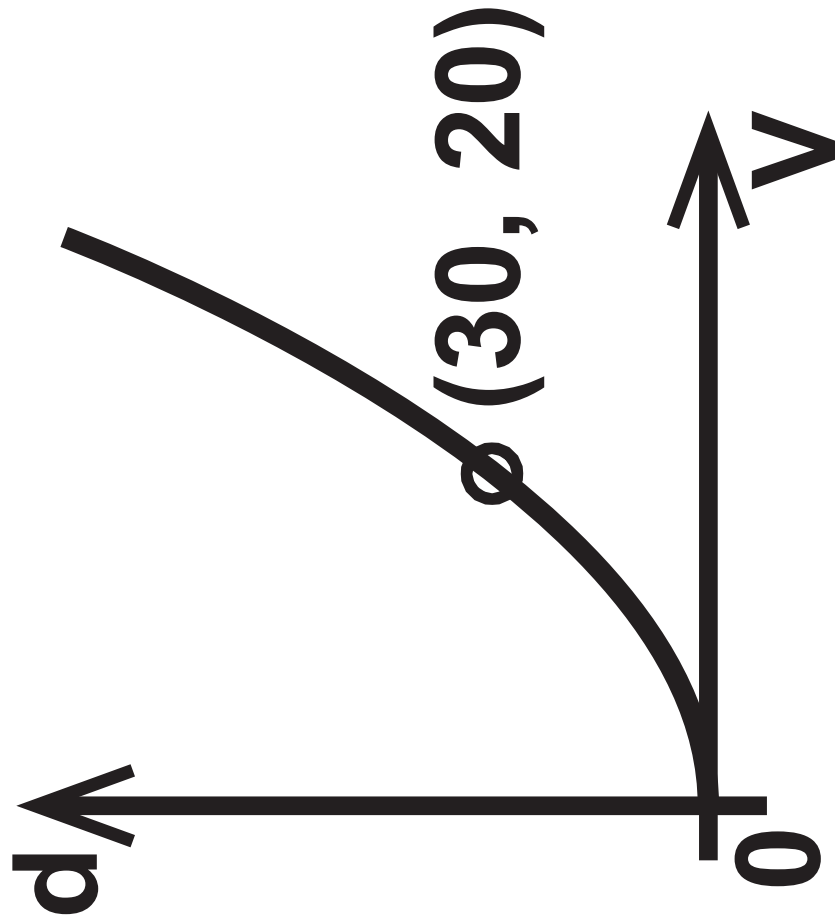
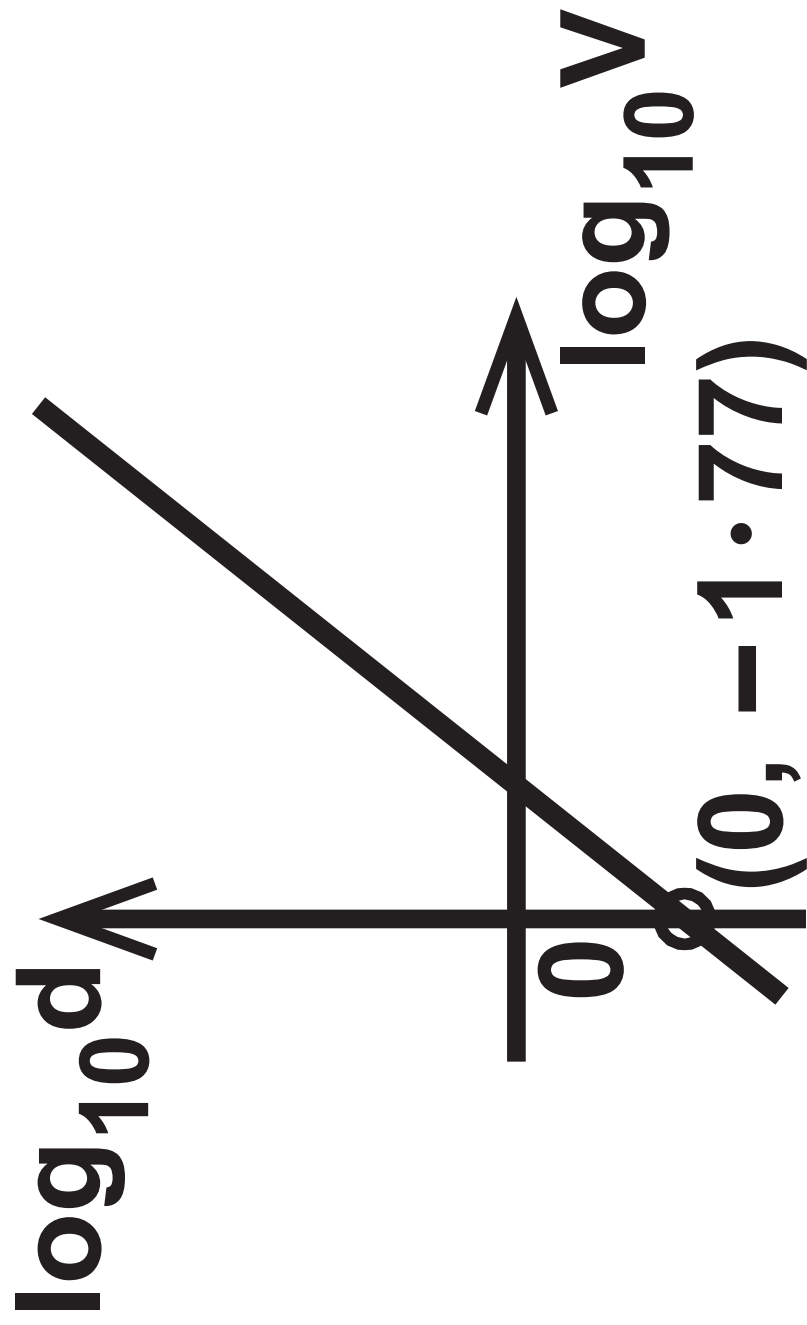
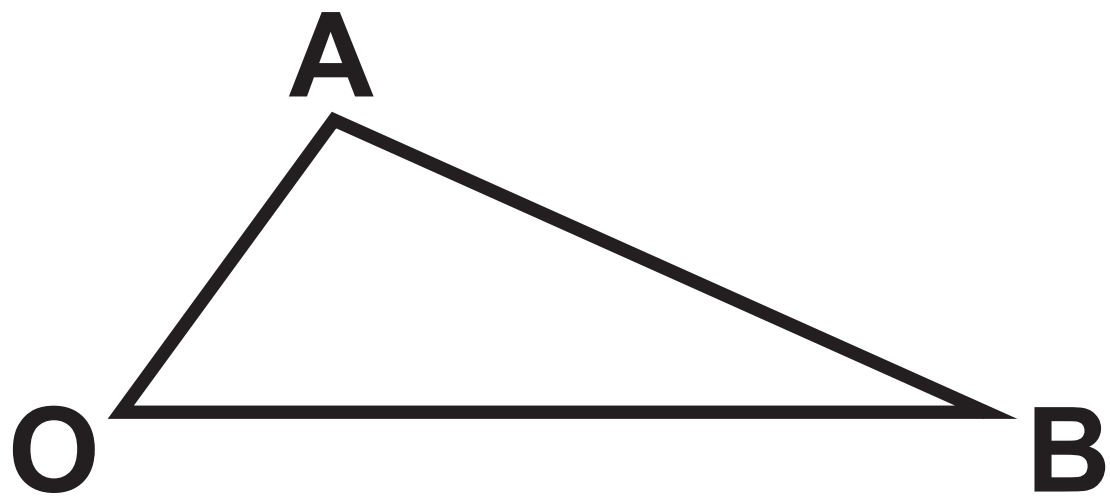


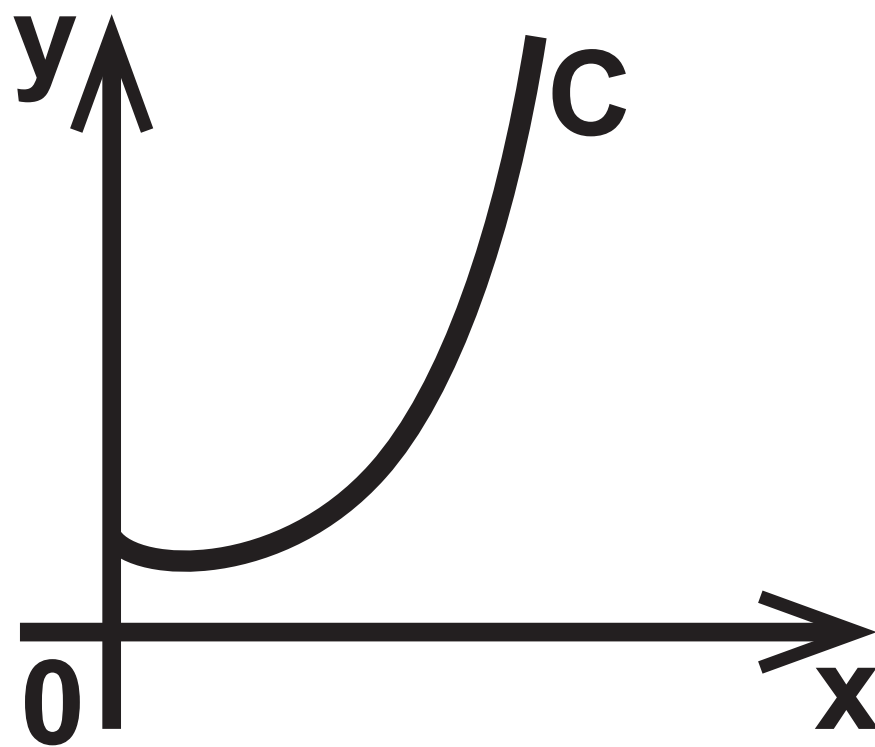
Diagram 2



Question 10



Question 11



Question 13

[A sphere of radius r has volume $\frac{4}{3}\pi r^3$
and surface area $4\pi r^2$]

